

Heaven and Earth Designs

Karma Fairy

Chart No: HAEBL 8598

By Michele Sayetta

Artwork by Bernadette Lusk



Heaven and Earth Designs

425 9th Street SW

Willmar MN 56201

320-214-7998

www.heavenandearthdesigns.com

Copyright Heaven and Earth Designs 2004

Instructions

The model for Karma Fairy is stitched over 1 on 25ct, Linen or Evenweave may be used. You may use 1 or 2 strands of floss depending on your preference.

It is recommended that you make working copies and enlarge to view detail and symbols.

We also suggest using a #28 needle when working over 1 on 25ct.

This is a large project that will offer many hours of stitching pleasure.

We thank you for purchasing this design and welcome any questions or comments That you may have.

Heaven and Earth Designs

Karma Fairy

(Large Format)

Chart No: HAEBL 8598

By Michele Sayetta

Artwork by Bernadette Lusk



Heaven and Earth Designs

425 9th Street SW

Willmar MN 56201

320-214-7998

www.heavenandearthdesigns.com

Copyright Heaven and Earth Designs 2004

Instructions

The model for Karma Fairy is stitched over 1 on 25ct, Linen or Evenweave may be used. You may use 1 or 2 strands of floss depending on your preference.

It is recommended that you make working copies and enlarge to view detail and symbols.

We also suggest using a #28 needle when working over 1 on 25ct.

This is a large project that will offer many hours of stitching pleasure.

We thank you for purchasing this design and welcome any questions or comments That you may have.

Heaven and Earth Designs

Keeper of the Cauldron

(Large Format)

Chart No: HAEJGL679

By Michele Sayetta

Artwork by Jessica Galbreth



Finished Design Size 300W by 393H (12WX 15-5/8 H inches on 25ct fabric)

Heaven and Earth Designs

633 18th Ave SW

Rochester, MN 55902

507-280-8249

www.heavenandearthdesigns.com

Copyright Heaven and Earth Designs 2004

Copyright Jessica Galbreth 2004

Keeper of the Cauldron

By Michele Sayetta

Artwork by Jessica Galbreth

Materials List

1	DMC	50 skeins	Refer to inside sheet
---	-----	-----------	-----------------------

This chart pack, or any part of this design or chart may not be reproduced in whole or in part in any form without the written permission from Michele Sayetta.

©Copyright 2004 Heaven and Earth Designs.

©Copyright 2004 Jessica Galbreth

Instructions

The model for Keeper of the Cauldron is stitched
over
1 on 25ct, Linen or Evenweave may be used. You
may use 1 or 2 strands of floss depending on your
preference.

It is recommended that you make working copies and
enlarge to view detail and symbols.

We also suggest using a #28 needle when working
over 1 on 25ct.

This is a large project that will offer many hours of
stitching pleasure.

We thank you for purchasing this design and
welcome any questions or comments
That you may have.

Heaven and Earth Designs
Keeper of The Dream Spirit

Chart No: HAELS 1554

By Michele Sayetta

Artwork by Lee Anne Seed



Finished Design Size 400 W by 573 H (16 WX 22-7/8 H inches on 25ct)

Heaven and Earth Designs

425 9th Street SW

Willmar MN 56201

320-214-7998

www.heavenandearthdesigns.com

Copyright Heaven and Earth Designs 2006

Copyright Lee Anne Seed 2006

Instructions

The model for Keeper of The Dream Spirit is stitched over 1 on 25 count Dublin Linen. Please use 1 strand of floss or 2 depending on your coverage preference.

It is recommended that you make working copies and enlarge to view detail and symbols.

You may also use the tent stitch or full crosses depending on your preference.

This is a large project that will offer many hours of stitching pleasure.

We thank you for purchasing this design and welcome any questions or comments that you may have.

Heaven and Earth Designs

Keeper of The Dream Spirit

(Large Format)

Chart No: HAELS 1554

By Michele Sayetta

Artwork by Lee Anne Seed



Finished Design Size 400 W by 573 H (16 WX 22-7/8 H inches on 25ct)

Heaven and Earth Designs

425 9th Street SW

Willmar MN 56201

320-214-7998

www.heavenandearthdesigns.com

Copyright Heaven and Earth Designs 2006

Copyright Lee Anne Seed 2006

Instructions

The model for Keeper of The Dream Spirit is stitched over 1 on 25 count Dublin Linen. Please use 1 strand of floss or 2 depending on your coverage preference.

It is recommended that you make working copies and enlarge to view detail and symbols.

You may also use the tent stitch or full crosses depending on your preference.

This is a large project that will offer many hours of stitching pleasure.

We thank you for purchasing this design and welcome any questions or comments that you may have.

Heaven and Earth Designs

Keeper of the Forest

Chart No: HAESM205

By Michele Sayetta

Artwork by Sue Miller



Finished Design Size 300W by 418H (12 WX 16-5/8 H inches on 25ct fabric)

Heaven and Earth Designs

633 18th Ave SW

Rochester, MN 55902

507-280-8249

www.heavenandearthdesigns.com

Copyright Heaven and Earth Designs 2004

Copyright Sue Miller 2004

Keeper of the Forest
By Michele Sayetta
Artwork by Sue Miller

Materials List

DMC

50 skeins

Refer to inside sheet

This chart pack, or any part of this design or chart may not be reproduced in whole or in part in any form without the written permission from Michele Sayetta.

©Copyright 2004 Heaven and Earth Designs.

©Copyright Sue Miller 2004

Instructions

The model for Keeper of the Forest is stitched
over
1 on 25ct, Linen or Evenweave may be used. You
may use 1 or 2 strands of floss depending on your
preference.

It is recommended that you make working copies and
enlarge to view detail and symbols.

We also suggest using a #28 needle when working
over 1 on 25ct.

This is a large project that will offer many hours of
stitching pleasure.

We thank you for purchasing this design and
welcome any questions or comments
That you may have.

Heaven and Earth Designs

Kelly of Raven Wood

Chart No: HAEJSW 122

By Michele Sayetta

Artwork by Jane Starr Weils



Finished Design Size 300 W by 399 H (12 WX 15-7/8 H inches on 25ct)

Heaven and Earth Designs

425 9th Street SW

Willmar MN 56201

320-214-7998

www.heavenandearthdesigns.com

Copyright Heaven and Earth Designs 2006

Copyright Jane Starr Weils 2006

Instructions

The model for Kelly of Raven Wood is stitched over 1 on 25 count Dublin Linen. Please use 1 strand of floss or 2 depending on your coverage preference.

It is recommended that you make working copies and enlarge to view detail and symbols.

You may also use the tent stitch or full crosses depending on your preference.

This is a large project that will offer many hours of stitching pleasure.

We thank you for purchasing this design and welcome any questions or comments that you may have.

Heaven and Earth Designs

Kelly of Raven Wood

(Large Format)

Chart No: HAEJSW 122

By Michele Sayetta

Artwork by Jane Starr Weils



Finished Design Size 300 W by 399 H (12 WX 15-7/8 H inches on 25ct)

Heaven and Earth Designs

425 9th Street SW

Willmar MN 56201

320-214-7998

www.heavenandearthdesigns.com

Copyright Heaven and Earth Designs 2006

Copyright Jane Starr Weils 2006

Instructions

The model for Kelly of Raven Wood is stitched over 1 on 25 count Dublin Linen. Please use 1 strand of floss or 2 depending on your coverage preference.

It is recommended that you make working copies and enlarge to view detail and symbols.

You may also use the tent stitch or full crosses depending on your preference.

This is a large project that will offer many hours of stitching pleasure.

We thank you for purchasing this design and welcome any questions or comments that you may have.

Heaven and Earth Designs

Kimono Fairy-Winter Visitor

Chart No: HAECCK 102

By Michele Sayetta

Artwork by Ching-Chou Kuik



Finished Design Size 350 W by 490 H (14 W X 19-1/2 H inches on 25ct fabric)

Heaven and Earth Designs

425 9th Street SW

Willmar MN 56201

320-214-7998

www.heavenandearthdesigns.com

Copyright Heaven and Earth Designs 2006

Instructions

The model for Kimono Fairy-Winter Visitor is stitched over 1 on 25ct, Linen or Evenweave may be used. You may use 1 or 2 strands of floss depending on your preference.

It is recommended that you make working copies and enlarge to view detail and symbols.

We also suggest using a #28 needle when working over 1 on 25ct.

This is a large project that will offer many hours of stitching pleasure.

We thank you for purchasing this design and welcome any questions or comments

That you may have.

Heaven and Earth Designs
320-214-7998

[Http://www.heavenandearthdesigns.com](http://www.heavenandearthdesigns.com)

Heaven and Earth Designs

Kimono Fairy-Winter Visitor

(Large Format)

Chart No: HAECCCK 102

By Michele Sayetta

Artwork by Ching-Chou Kuik



Finished Design Size 350 W by 490 H (14 W X 19-1/2 H inches on 25ct fabric)

Heaven and Earth Designs

425 9th Street SW

Willmar MN 56201

320-214-7998

www.heavenandearthdesigns.com

Copyright Heaven and Earth Designs 2006

Instructions

The model for Kimono Fairy-Winter Visitor is stitched over 1 on 25ct, Linen or Evenweave may be used. You may use 1 or 2 strands of floss depending on your preference.

It is recommended that you make working copies and enlarge to view detail and symbols.

We also suggest using a #28 needle when working over 1 on 25ct.

This is a large project that will offer many hours of stitching pleasure.

We thank you for purchasing this design and welcome any questions or comments

That you may have.

Heaven and Earth Designs
320-214-7998

[Http://www.heavenandearthdesigns.com](http://www.heavenandearthdesigns.com)

Heaven and Earth Designs

Kimono Mermaid

Chart No: HAECCK 410

By Michele Sayetta

Artwork by Ching-Chou Kuik



Finished Design Size 350 W by 530 H (14 W X 21-1/8 H inches on 25ct fabric)

Heaven and Earth Designs

425 9th Street SW

Willmar MN 56201

320-214-7998

www.heavenandearthdesigns.com

Copyright Heaven and Earth Designs 2006

Instructions

The model for Kimono Mermaid is stitched over 1 on 25ct, Linen or Evenweave may be used. You may use 1 or 2 strands of floss depending on your preference.

It is recommended that you make working copies and enlarge to view detail and symbols.

We also suggest using a #28 needle when working over 1 on 25ct.

This is a large project that will offer many hours of stitching pleasure.

We thank you for purchasing this design and welcome any questions or comments

That you may have.

*Heaven and Earth Designs
320-214-7998*

[Http://www.heavenandearthdesigns.com](http://www.heavenandearthdesigns.com)

Heaven and Earth Designs

Kimono Mermaid

(Large Format)

Chart No: HAECCK 410

By Michele Sayetta

Artwork by Ching-Chou Kuik



Finished Design Size 350 W by 530 H (14 W X 21-1/8 H inches on 25ct fabric)

Heaven and Earth Designs

425 9th Street SW

Willmar MN 56201

320-214-7998

www.heavenandearthdesigns.com

Copyright Heaven and Earth Designs 2006

Instructions

The model for Kimono Mermaid is stitched over 1 on 25ct, Linen or Evenweave may be used. You may use 1 or 2 strands of floss depending on your preference.

It is recommended that you make working copies and enlarge to view detail and symbols.

We also suggest using a #28 needle when working over 1 on 25ct.

This is a large project that will offer many hours of stitching pleasure.

We thank you for purchasing this design and welcome any questions or comments

That you may have.

Heaven and Earth Designs
320-214-7998

[Http://www.heavenandearthdesigns.com](http://www.heavenandearthdesigns.com)

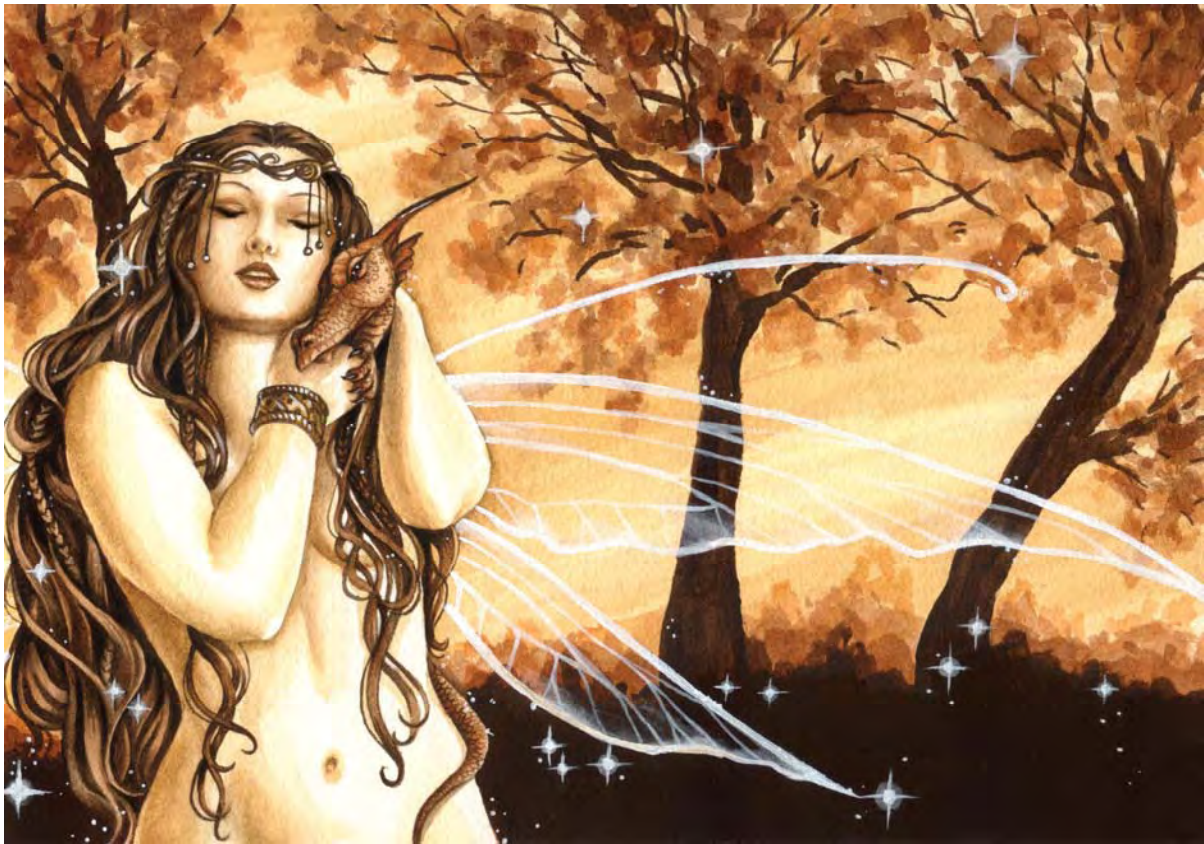
Heaven and Earth Designs

Kindred

Chart No: HAESF027

By Michele Sayetta

Artwork by Selina Fenech



Finished Design Size 450W by 322H (18WX 12-7/8 H inches on 25ct fabric)

Heaven and Earth Designs

425 9th Street SW

Willmar MN 56201

320-214-7998

www.heavenandearthdesigns.com

Copyright Heaven and Earth Designs

Copyright Selina Fenech

Kindred
By Michele Sayetta
Artwork by Selina Fenech

Materials List

1 DMC 50 skeins Refer to inside sheet

This chart pack, or any part of this design or chart may not be reproduced in whole or in part in any form without the written permission from Michele Sayetta.

©Copyright Heaven and Earth Designs.

©Copyright Selina Fenech

Instructions

The model for Kindred is stitched over 1 on 25ct, Linen or Evenweave may be used. You may use 1 or 2 strands of floss depending on your preference.

It is recommended that you make working copies and enlarge to view detail and symbols.

We also suggest using a #28 needle when working over 1 on 25ct.

This is a large project that will offer many hours of stitching pleasure.

We thank you for purchasing this design and welcome any questions or comments that you may have.

Heaven and Earth Designs
507-280-8249

<http://www.heavenandearthdesigns.com>

Heaven and Earth Designs

Kindred Spirits

Chart No: H A E S L033

By Michele Sayetta

Artwork by Stephanie Pui-Mun Law



Finished Design Size 300W by 407H (12W X 16-1/4 H inches on 25ct fabric)

Heaven and Earth Designs

633 18th Ave SW

Rochester, MN 55902

507-280-8249

www.heavenandearthdesigns.com

Copyright Heaven and Earth Designs 2005

Copyright Stephanie Pui-Mun Law 2005

Kindred Spirits

By Michele Sayetta

Artwork by Stephanie Pui-Mun Law

Materials List

1	DMC	50 skeins	Refer to inside sheet
---	-----	-----------	-----------------------

This chart pack, or any part of this design or chart may not be reproduced in whole or in part in any form without the written permission from Michele Sayetta.

©Copyright 2005 Heaven and Earth Designs

©Copyright 2005 Stephanie Pui-Mun Law

Instructions

The model for Kindred Spirits is stitched over 1 on 25ct, Linen or Evenweave may be used. You may use 1 or 2 strands of floss depending on your preference.

It is recommended that you make working copies and enlarge to view detail and symbols.

We also suggest using a #28 needle when working over 1 on 25ct.

This is a large project that will offer many hours of stitching pleasure.

We thank you for purchasing this design and welcome any questions or comments that you may have.

Heaven and Earth Designs

Kitchen Witch

Chart No: HAEBA012

By Michele Sayetta

Artwork by Brigid Ashwood



Finished Design Size 279W by 312H (11-1/8WX 12-3/8H inches on 25ct fabric)

Heaven and Earth Designs

633 18th Ave SW

Rochester, MN 55902

507-280-8249

www.heavenandearthdesigns.com

Copyright Heaven and Earth Designs 2005

Copyright -Brigid Ashwood 2005

Instructions

The model for Kitchen Witch is stitched over 1 on 25ct, Dublin Linen . You may use one or two strands of floss, depending on your preference for coverage.

We also suggest using a #28 needle when working over 1 on 25ct.

This is a large project that will offer many hours of stitching pleasure.

We thank you for purchasing this design and
We welcome any questions or comments
that you may have.

Heaven and Earth Designs

Kitchen Witch

(Large Format)

Chart No: HAEBA024

By Michele Sayetta



Finished Design Size 279W by 312H (11-1/8WX 12-3/8H inches on 25ct fabric)

Heaven and Earth Designs

425 9th Street SW

Willmar MN 56201

320-214-7998

www.heavenandearthdesigns.com

Copyright Heaven and Earth Designs 2005

Copyright -Brigid Ashwood 2005

Instructions

The model for Kitchen Witch is stitched over 1 on 25ct, Dublin Linen . You may use one or two strands of floss, depending on your preference for coverage.

We also suggest using a #28 needle when working over 1 on 25ct.

This is a large project that will offer many hours of stitching pleasure.

We thank you for purchasing this design and
We welcome any questions or comments
that you may have.

Heaven and Earth Designs

Kitten With Heart

Chart No: HAECH 5236

By Michele Sayetta

Artwork by Carrie Hawks



Finished Design Size 400W by 499H (16WX 19-7/8 H inches on 25ct fabric)

Heaven and Earth Designs

425 9th Street SW

Willmar MN 56201

320-214-7998

www.heavenandearthdesigns.com

Copyright Heaven and Earth Designs

Copyright Carrie Hawks 2006

Instructions

The model for Kitten With Heart is stitched over 1 on 25ct, Linen or Evenweave may be used. You may use 1 or 2 strands of floss depending on your preference.

It is recommended that you make working copies and enlarge to view detail and symbols.

We also suggest using a #28 needle when working over 1 on 25ct.

This is a large project that will offer many hours of stitching pleasure.

We thank you for purchasing this design and welcome any questions or comments that you may have.

Heaven and Earth Designs

320-214-7998

<http://www.heavenandearthdesigns.com>

Heaven and Earth Designs

Kitten With Heart

(Large Format)

Chart No: HAECH 5236

By Michele Sayetta

Artwork by Carrie Hawks



Finished Design Size 400W by 499H (16WX 19-7/8 H inches on 25ct fabric)

Heaven and Earth Designs

425 9th Street SW

Willmar MN 56201

320-214-7998

www.heavenandearthdesigns.com

Copyright Heaven and Earth Designs

Copyright Carrie Hawks 2006

Instructions

The model for Kitten With Heart is stitched over 1 on 25ct, Linen or Evenweave may be used. You may use 1 or 2 strands of floss depending on your preference.

It is recommended that you make working copies and enlarge to view detail and symbols.

We also suggest using a #28 needle when working over 1 on 25ct.

This is a large project that will offer many hours of stitching pleasure.

We thank you for purchasing this design and welcome any questions or comments that you may have.

Heaven and Earth Designs

320-214-7998

<http://www.heavenandearthdesigns.com>

Heaven and Earth Designs

Kyara

Chart No: HAEMG 020

By Michele Sayetta

Artwork by Marjolein Gulinski



Finished Design Size 300 W by 442 H (12 WX 17-5/8 H inches on 25ct fabric)

Heaven and Earth Designs

425 9th Street SW

Willmar MN 56201

320-214-7998

www.heavenandearthdesigns.com

Copyright Heaven and Earth Designs 2006

Copyright Marjolein Gulinski 2006

Instructions

The model for Kyara is stitched over 1 on 25ct, Linen or Evenweave may be used. You may use 1 or 2 strands of floss depending on your preference.

It is recommended that you make working copies and enlarge to view detail and symbols.

We also suggest using a #28 needle when working over 1 on 25ct.

This is a large project that will offer many hours of stitching pleasure.

We thank you for purchasing this design and welcome any questions or comments that you may have.

*Heaven and Earth Designs
320-214-7998*

[Http://www.heavenandearthdesigns.com](http://www.heavenandearthdesigns.com)

Heaven and Earth Designs

Kyara

(Large Format)

Chart No: HAEMG 020

By Michele Sayetta

Artwork by Marjolein Gulinski



Finished Design Size 300 W by 442 H (12 WX 17-5/8 H inches on 25ct fabric)

Heaven and Earth Designs

425 9th Street SW

Willmar MN 56201

320-214-7998

www.heavenandearthdesigns.com

Copyright Heaven and Earth Designs 2006

Copyright Marjolein Gulinski 2006

Instructions

The model for Kyara is stitched over 1 on 25ct, Linen or Evenweave may be used. You may use 1 or 2 strands of floss depending on your preference.

It is recommended that you make working copies and enlarge to view detail and symbols.

We also suggest using a #28 needle when working over 1 on 25ct.

This is a large project that will offer many hours of stitching pleasure.

We thank you for purchasing this design and welcome any questions or comments that you may have.

*Heaven and Earth Designs
320-214-7998*

[Http://www.heavenandearthdesigns.com](http://www.heavenandearthdesigns.com)

Heaven and Earth Designs

Kyra's Treasure

Chart No: HAENT 2204

By Michele Sayetta

Artwork by Nadia Tate



Finished Design Size 300 W by 379 H (12 WX 15-1/8 inches on 25ct)

Heaven and Earth Designs

425 9th Street SW

Willmar MN 56201

320-214-7998

www.heavenandearthdesigns.com

Copyright Heaven and Earth Designs 2006

Copyright Nadia Tate 2006

Instructions

The model for Kyra's Dream is stitched over 1 on 25 count Dublin Linen. Please use 1 strand of floss or 2 depending on your coverage preference.

It is recommended that you make working copies and enlarge to view detail and symbols.

You may also use the tent stitch or full crosses depending on your preference.

This is a large project that will offer many hours of stitching pleasure.

We thank you for purchasing this design and welcome any questions or comments that you may have.

Heaven and Earth Designs
Copyright Nadia Tate 2006

Heaven and Earth Designs

Kyra's Treasure

(Large Format)

Chart No: HAENT 2204

By Michele Sayetta

Artwork by Nadia Tate



Finished Design Size 300 W by 379 H (12 WX 15-1/8 inches on 25ct)

Heaven and Earth Designs

425 9th Street SW

Willmar MN 56201

320-214-7998

www.heavenandearthdesigns.com

Copyright Heaven and Earth Designs 2006

Copyright Nadia Tate 2006

Instructions

The model for Kyra's Dream is stitched over 1 on 25 count Dublin Linen. Please use 1 strand of floss or 2 depending on your coverage preference.

It is recommended that you make working copies and enlarge to view detail and symbols.

You may also use the tent stitch or full crosses depending on your preference.

This is a large project that will offer many hours of stitching pleasure.

We thank you for purchasing this design and welcome any questions or comments that you may have.

Heaven and Earth Designs
Copyright Nadia Tate 2006